

fischer[®]technik[®]

construction model railway



New

I can now play
with fischertechnik
and railways at
the same time



fischer[®]technik[®]

construction model railway

Model railways have been a fascinating pastime for young and old for many generations. The six year old and upwards not only experiences fun whilst playing but also has the added enjoyment of assembly, reconstruction and expansion with the fischertechnik construction model railway. The structural parts of this railway, the locomotive as well as the wagons, are as unique in their perfec-

tionally acknowledged. There is the reliability of the fischertechnik trade-mark with the guarantee, that this carefully thought out and constantly expanding system, can be added to and replaced. With the fischertechnik construction model railway, playing "railways", suddenly means more than ever before: the railway has been self-constructed. It can look completely different

tion and versatility as the fischertechnik system itself. In this way the fischertechnik construction model railway is like any other railway and yet cannot be compared with any other railway.

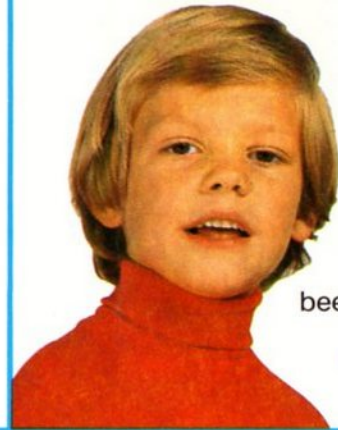
There is the quality of the original fischertechnik parts with a two year guarantee. There is the versatility of fischertechnik which is well-known throughout the world and educa-

from day to day but is still fischertechnik – always an idea ahead.

More than just playing railways



as unique as the fischertechnik construction system

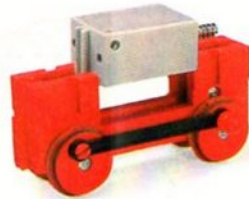


I have never
been able to build
such a lovely
railway myself

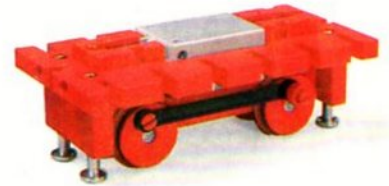
Assembly



A simple instruction book and
clearly arranged parts . . .



. . . make the assembly child's
play. An example is the side
tank locomotive:



the parts are put together
simply, . . .

. . . the fischertechnik mini
motor and the brush contacts
are connected with wires, . . .



. . . the boiler, side tanks and
cab are added . . .



. . . and the locomotive is
complete.



The wagons are even simpler.



fischer**technik**[®]

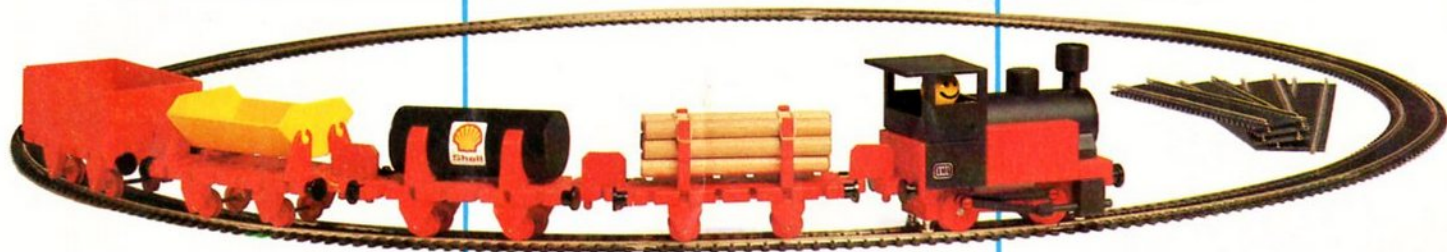
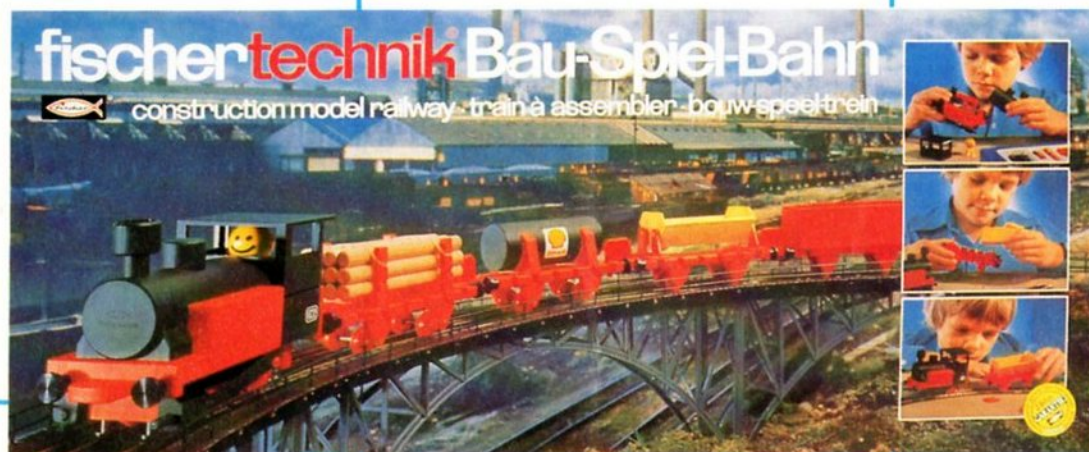
Introduction kit goods train

Art.No. 30101

Contents

- 1 side tank locomotive
- 4 different goods vans
- 16 pieces of track

The fischertechnik construction model railway is driven by the fischertechnik mini-motor.



Complete equipment for D.C. electricity, with motor but without transformer. Gauge HO.

construction model railway

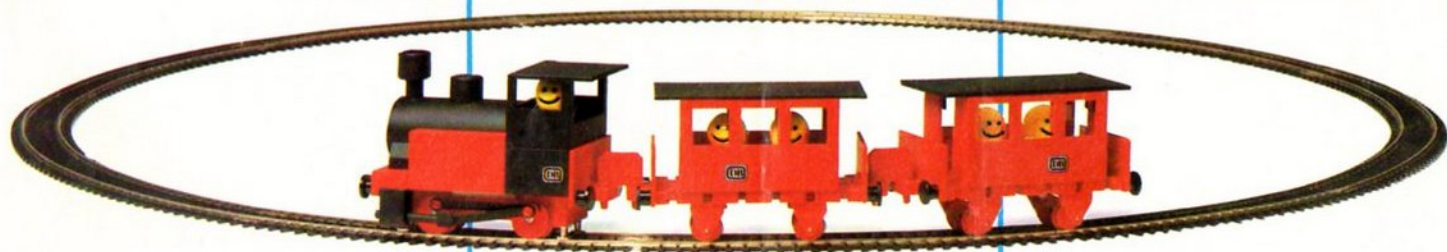
The power supply may be obtained either by using the fischertechnik transformer mot. 4 or any other transformer designed for toys with an adjustable D.C. output.

Art.No. 30102

Contents

- 1 side tank locomotive
- 2 passenger coaches
- 12 pieces of track
- 5 toy figures

Introduction kit passenger train

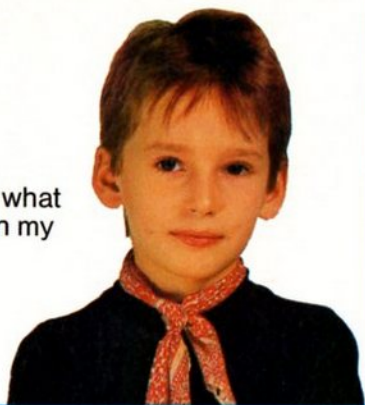


Complete equipment for D.C. electricity, with motor but without transformer. Gauge HO.





I now know what
to ask for on my
birthday



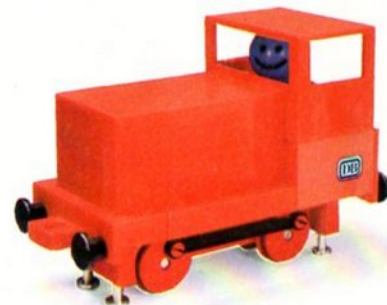
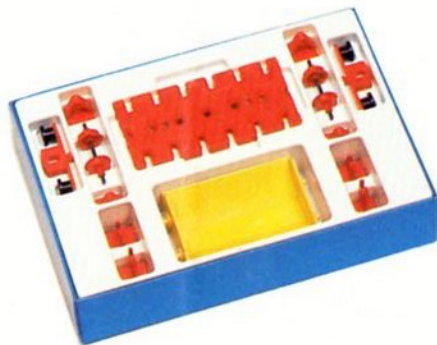
fischer[®]technik[®]

construction model railway

fischertechnik transformator mot 4
Art.No. 30173



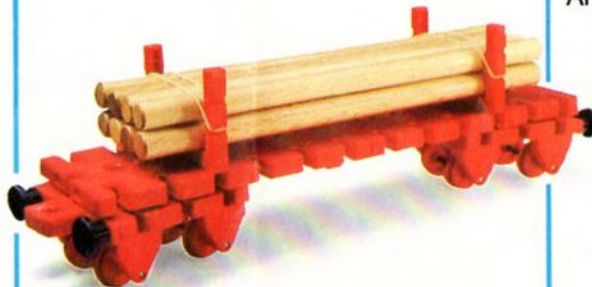
diesel shunter
Art.No 30110



side tank locomotive
Art.No. 30111



passenger coach
Art.No. 30116



bogie-wagon with logs
Art.No 30115

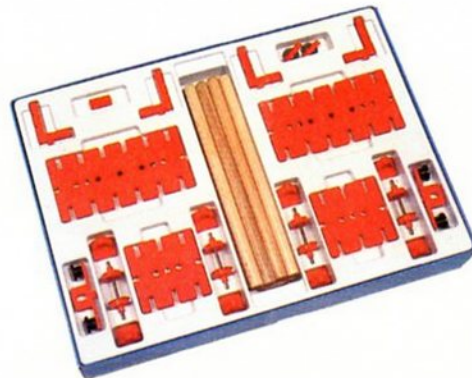
Supplementary packs



At last my grandmother knows what presents to buy me



crane wagon
Art.No. 30118



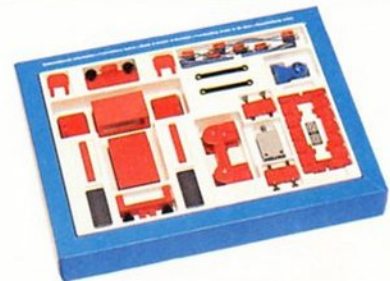
flat wagon
Art.No. 30121



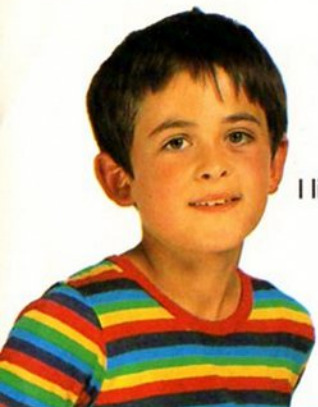
tank wagon
Art.No. 30119



tipper wagon
Art.No. 30120



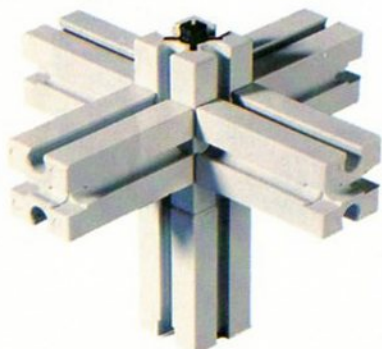
The railway can be extended by using standard HO-two rail tracks and points.



I like playing with
fischertechnik
best of all
because
everything
works as in
real life

fischertechnik Building and playing as never before

The unique fischertechnik building
block can be built on to all six
sides.



By simple interlocking ...

... solid, functioning models are
produced.



The 3 - 6 programme is available for
children 3 years upwards.



There are basic kits for children
over 6 to build cars, construction
vehicles and machines with.

Even with the smallest basic kit
"50", 50 lovely models can be
built.

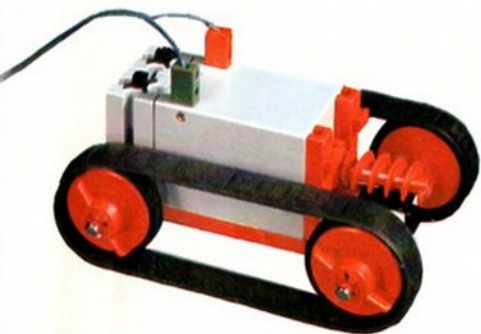




fischer[®]technik[®]

Construction kits

fischertechnik fascinates children and grown-ups, parents and teachers all over the world. This unique system is educationally an excellent method of opening up the world of technology. What has been seen and experienced can be pondered over, built true to life and understood.

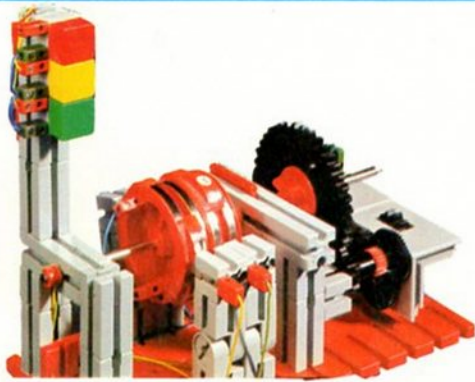


Everything turns and moves just as in reality with the electric motor.

fischertechnik Statics is designed for the building of bridges, cranes and towers so that children can copy their environment more true to life.

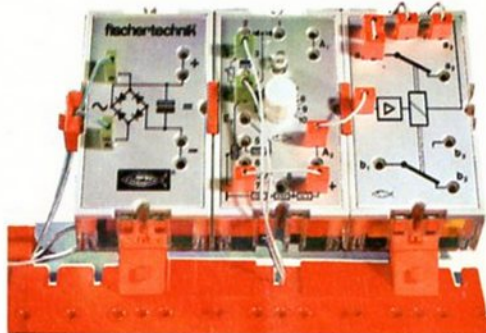


The basic and static kits can be enlarged economically by supplementary kits.



Even 10 year olds can steer and control models electrically ...

... with fischertechnik electro-mechanics and electronics.



And most important:
All the parts of the fischertechnik construction model railway are completely compatible with the parts of the fischertechnik system. A system which cannot be grown out of.

Trading company
for the U.K.:
Artur Fischer U.K. Ltd.
25, Newtown Road
Marlow. Bucks. SL7 1JY

Trading company
for Australia:
Artur Fischer Australia
19, Kensal Street
Moorooka Qld. 4104

Fischer-Werke
Artur Fischer GmbH & Co. KG
D-7244 Tumlingen-Waldachtal 3
Printed in W.-Germany

Art.-No. 6 39078 1
Ref.-No. 429/65/1/9/3